

# **WILL COUNTY LAND USE**

---

## **RR & E DIVISION OVERVIEW**

---

**JANUARY 23, 2019**



# Resource, Recovery, & Energy

## **Will County Solid Waste Plan**

A 20 year planning document

Required by State Law, updated and adopted in 2016

Provides authority over incorporated and unincorporated areas of the residential and commercial areas of the County

## **Prairie View Landfill**

Owned by Will County, operated by WM, oversight RR&E

Opened January 2004, currently projected to close in 2042,

Legislation passed to open service area & closure date

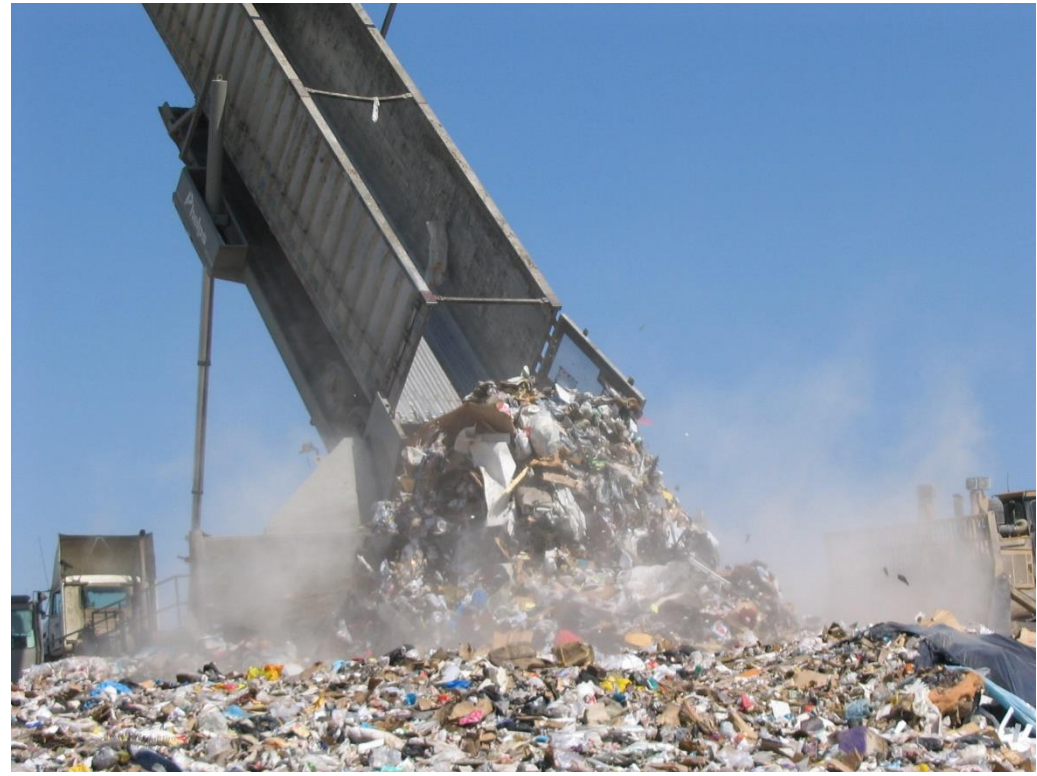
Revenue to both the general fund, RR&E & local districts

Methane Gas recovery powers 3,000 homes per year





# Resource, Recovery, & Energy



Will County is an IEPA delegated County (began in 1988)  
**Enforcement:** Inspect active and closed landfills, transfer stations, compost and land application site, illegal dumping and burning complaints, cleaning up thousands of sites.



**School Education Program** since 1998. About 50 schools each year earn an Earth Flag through on-going efforts at the school and a full grade level presentation on waste reduction, conservation and efficiency.





# Resource, Recovery, & Energy



**Adult Education:** RRE Staff provide booth support at local events, offer presentations at libraries, businesses, at government meetings and community group meetings.

**Digital Outreach:** In 2010 Will County launched a **website**, a **social media** program and monthly electronic **newsletter** to provide a variety of environmental education to adults and children (the website includes games, a search tool and information by community). Over 40,000 thousand residents interact on these each year.





# Resource, Recovery, & Energy



Will County won the **Governor's Sustainability Award in 2012**

**Collection Programs:** Since the 1990s the County has offered a variety of special collection programs to provide services to residents.



**Household Hazardous Waste:** One Day Events, fund permanent site in Naperville under partnership with the city, IEPA, DuPage, & Kane.



**Electronics:** One-Day and seven permanent collection partner sites

**Books:** A 3-Day event each June, partner with Sharefest and occasionally others to collect, reuse and recycle books.





# Resource, Recovery, & Energy



**Recyclepalooza:** Occasionally we offer more than HHW and Electronics at a One-Day event – we include Wood, Scrap Metal, Styrofoam, Home Goods, American Flags, Eye Glasses and more.



**Textiles:** The first week of May at the County Building clothing and fabrics in all conditions, a Back-to-School drive in August, partner with Really, Really Free Market in Plainfield, Sharefest and more.



**Traditional Drop-Offs:** We partner with municipalities, townships, park districts to offer residents and small businesses access to paper and container recycling.

**Pharmaceutical Collections:** We partner with local police.

