

Recycling Options in Will County



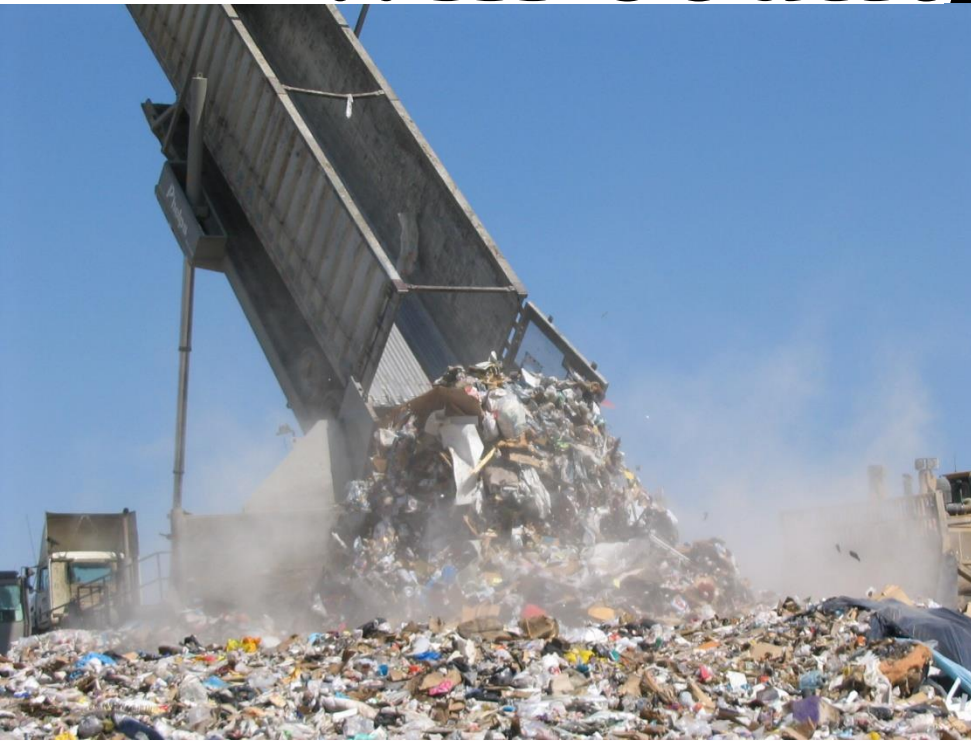
815-727-8834

-  Electronics Recycling
-  Household Hazardous Waste
-  Book Reuse and Recycling
-  Traditional Drop-off Recycling
-  Environmental Enforcement
-  Green Business Program
-  School Earth Flag Program
-  Medication Take-Back Programs



Presented by Marta Keane

Will County's Landfill

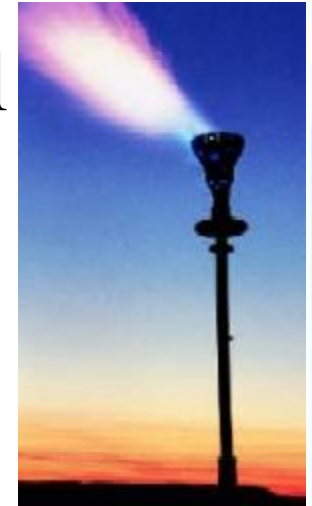
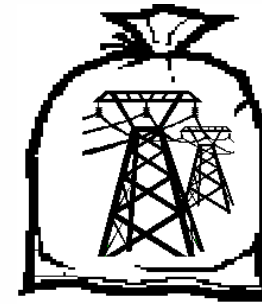


Prairie View Landfill: Opened January of 2004
Intended for Will County waste only
Expected to service the area until 2042



Gas-to-Energy

- Gas-to-Energy Facility at County Landfill
 - Cost: \$1,000,000 of \$7.2 million project
 - Public/Private Partnership
 - Revenue for future green projects
 - GHG Reduced



Our largest EECBG project, and one that provides long-term funding for additional “green” projects in the coming decades.

Old vs New Web Education



Permanent Recycling Locations



Recycling Guide



Special Collection Events



Hauler Reporting Ordinance	HTML PDF	Ordinance regarding the collection of municipal waste (garbage, recyclables, landscape waste, tires, construction & demolition debris) in Will County. Reporting Forms available here.																						
Pollution Control Facility Siting Ordinance	PDF	Will County's adopted siting ordinance for pollution control facilities.																						
<table border="1"> <thead> <tr> <th>Resources</th> <th>Format</th> <th>Description</th> </tr> </thead> <tbody> <tr> <td>Solid Waste Plan</td> <td>PDF</td> <td>Adopted on Nov 20, 2008, the Will County Solid Waste Plan provides goals and objectives for recycling and waste disposal to meet the needs of Will County by 2030.</td> </tr> <tr> <td>2005 Annual Report file size 1.4Mb</td> <td>PDF</td> <td rowspan="3">The annual reports of the accomplishments of the Waste Services Division.</td> </tr> <tr> <td>2006 Annual Report file size 1.2Mb</td> <td>PDF</td> </tr> <tr> <td>2007 Annual Report file size 1.1Mb</td> <td>PDF</td> </tr> <tr> <td>Battery Recycling</td> <td>PDF</td> <td>Tips and instructions on how to properly recycle batteries of all types.</td> </tr> <tr> <td>Business Recycling Guide</td> <td>PDF</td> <td>A list of recycling options and resources designed for the business community.</td> </tr> <tr> <td>Cleaning Alternatives</td> <td>HTML PDF</td> <td>Many products that are commonly used around the house are toxic, and should not be disposed of in your trash. One way to avoid the worry of disposing of these materials is to find alternatives for these toxic products to begin with. This informative page lists a variety of easy-to-make alternatives</td> </tr> </tbody> </table>			Resources	Format	Description	Solid Waste Plan	PDF	Adopted on Nov 20, 2008, the Will County Solid Waste Plan provides goals and objectives for recycling and waste disposal to meet the needs of Will County by 2030.	2005 Annual Report file size 1.4Mb	PDF	The annual reports of the accomplishments of the Waste Services Division.	2006 Annual Report file size 1.2Mb	PDF	2007 Annual Report file size 1.1Mb	PDF	Battery Recycling	PDF	Tips and instructions on how to properly recycle batteries of all types.	Business Recycling Guide	PDF	A list of recycling options and resources designed for the business community.	Cleaning Alternatives	HTML PDF	Many products that are commonly used around the house are toxic, and should not be disposed of in your trash. One way to avoid the worry of disposing of these materials is to find alternatives for these toxic products to begin with. This informative page lists a variety of easy-to-make alternatives
Resources	Format	Description																						
Solid Waste Plan	PDF	Adopted on Nov 20, 2008, the Will County Solid Waste Plan provides goals and objectives for recycling and waste disposal to meet the needs of Will County by 2030.																						
2005 Annual Report file size 1.4Mb	PDF	The annual reports of the accomplishments of the Waste Services Division.																						
2006 Annual Report file size 1.2Mb	PDF																							
2007 Annual Report file size 1.1Mb	PDF																							
Battery Recycling	PDF	Tips and instructions on how to properly recycle batteries of all types.																						
Business Recycling Guide	PDF	A list of recycling options and resources designed for the business community.																						
Cleaning Alternatives	HTML PDF	Many products that are commonly used around the house are toxic, and should not be disposed of in your trash. One way to avoid the worry of disposing of these materials is to find alternatives for these toxic products to begin with. This informative page lists a variety of easy-to-make alternatives																						



Green Guide

Recycle and More

Initiatives

County Green Efforts

Business

Greening Business Practices

Education

Resources for Adults, Parents, Teachers

Connect

Contact and Learn



Shoe and Textile Collection

Annual reuse and recycling event done in cooperation with schools, the community and a variety of non-profit organizations

◀ Previous | Next ▶

Newsletter Signup

Interested in signing up for email blasts. Click [here](#) and start receiving newsletters and tips straight to your inbox!

Green News, Tips & Fun Facts

Solar Plant Planned for Old Joliet Arsenal Site
WJOL News - A company, Acciona, is planning to build a solar energy plant on the arsenal's southern industrial park in the Wilmington area. 100 acres...

[View All](#)

Upcoming Green Events

[America Recycles Day](#) (All Day Event)

[View All Events](#)

Welcome to willcountygreen.com

Welcome to WillCountyGreen.com, a new website brought to you as part of the educational efforts of Will County Energy Efficiency Strategy with funding from the U.S. Department of Energy. The mission of this website is to make information available to residents of all ages, business and community groups. This information will provide further understanding of ways to reduce energy

Kids Corner



New website opened America Recycles Day – Nov. 15, 2010
2,000 hits annually to 40,000+ visits annually



Recycle-It Map

Green Guide Database

City & Township Recycling Information

ReUse

Recycling

Electronic Item Information

Composting Information

Save Energy - Save \$

Bike and Transit

Special Events

Cleaning Alternatives

Household Hazardous Materials

Rain Barrels

Farm Fresh Options

Festival & Event Recycling

Newsletters

Green Groups

Links

Green Guide

Easy Ways to Be More Green

Welcome to the Will County Green Guide Page where there are easy to find topics that comprise our most frequently asked questions. Take some time to explore the many pages of information or just make a quick trip to our Map or Green Guide Database for the info you need.

In order to make it easy to increase the green in your life, this page features a connection to a "living map" where you can find the most convenient drop-off location for your needs. The drop-offs include traditional item recycling, at least 12 electronic recycling sites and medication disposal drop-offs, plus much more.

The Green Guide Database is packed with information on how to recycle or reuse just about everything. From shorts to shingles or calculators to ketchup bottles, there is a listing to offer you an alternative to disposal. Formally, a 36-page guide that was cumbersome and costly to produce, is now a much more easily updated and user friendly source of information for both residents and businesses.

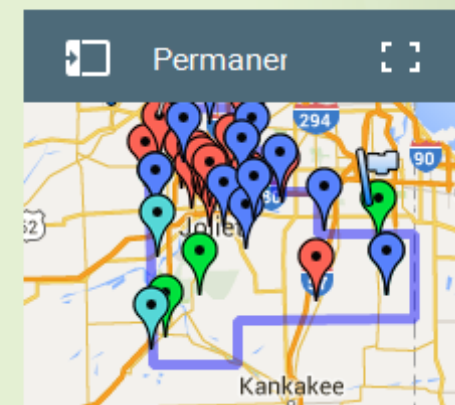
Our brochures, previously printed or available as PDF files, are now pages in their own right, with hotlink features and opportunities for additional information. Please click one to see how easily you can scan through to learn that most household batteries are no longer hazardous, or what to do with unwanted latex paint, and much more.

Beyond what you might expect from the County's long established efforts to promote recycling, this site offers information on the conservation of water and energy. We are working to feature alternative energy options and showcase county building "green" efforts as examples for businesses and homeowners alike.



Recycle-It Map

Looking for places to recycle in Will County?



View [Permanent Collection Sites](#) in a larger map

Too small for you? Click [here](#) for the full version!

Upcoming Green Events

[Pumpkin Pitch - Collecting Jack-O-Lanterns for Recycling](#) (09:00 AM - 12:00 PM)

[Pumpkin Pitch - Collecting Jack-O-Lanterns for Recycling](#) (09:00 AM - 12:00 PM)

[America Recycles Day 2015 Photo Competition Final Day](#) (All Day Event)

Recycling Center Search

Search by Item: Search by Category:

Residential Business

All types of fluorescent light bulbs contain mercury and should not be broken or placed in the regular garbage. Will County provides several one-day Household Hazardous Waste Collections annually and sponsors a permanent HHW collection site. Businesses should review the Business Recycling Guide for a list of companies that provide the EPA required records of proper recycling and mercury recovery

City	Name of Center	Category	Address	Contact	Extra Notes
Bethlehem	Bethlehem Lamp Recycling	Fluorescent Lights;	Bethlehem PA	Phone: 610-838-7034 http://www.bethlehemlamprecycling.com	
Chicago	Everlights	Fluorescent Lights;	9901 S Torrence Ave Chicago IL	Phone: 773-734-9873	
Ingleside	Fluorecycle	Fluorescent Lights;	27780 W Concrete Dr Ingleside IL	Phone: 815-363-4411	
Lisle	Air Cycle Corporation	Fluorescent Lights;	2200 Ogden Ave, Ste 100 Lisle IL	Phone: 800-909-9709	
Nationwide	Bulbs.com	Fluorescent Lights;	Nationwide	Phone: 888-455-2800 http://www.bulbs.com	
Nationwide	CRS	Fluorescent Lights;	Nationwide	Phone: 866-277-9797 http://www.CRSrecycle.com	

[Green Guide Database](#)

[Energy Retrofits for Businesses](#)

[Construction & Demolition Recycling](#)

[Energy Efficiency Projects](#)

[Better Building Challenge](#)

[Business Tips & Best Practices](#)

[Green Business Star Recognition Program](#)

[Green Business Seminars](#)

[Virtual Tours](#)

[Green Jobs](#)

[Energy Utility Assistance](#)

[Reporting](#)

[Business Links](#)

Virtual Tours

Select from our library of Recycling Videos Below

[GROOT INDUSTRIES](#) | [EAGLE ENTERPRISES](#) | [SIMS RECYCLING SOLUTIONS](#) | [BLH COMPUTERS](#)
[LAND AND LAKES](#) | [ENGINEERED PLASTIC SYSTEMS](#) | [BACKYARD FOOD SCRAP COMPOSTING](#)
[SETTING UP A SCHOOL AND WORKPLACE RECYCLING PROGRAM](#)

Energy Star - Workplace Cubical



What steps can everyone take to save energy at work? Find out by touring this fun, interactive cubicle! Click on the blue stars to see energy saving tips. Download and share it with co-workers to promote energy efficiency in your office. This virtual office is a part of EPA's ENERGY STAR Bring Your Green to Work campaign, which offers tools and interactive resources that can help you and your coworkers reduce energy use in the office.

Eagle Enterprises:

Eagle Enterprises is a relatively small, rural recycling processing center located in Galva, in western Illinois. Eagle Enterprises' operation relies mainly on manual labor for sorting and consolidating materials from an elevated sorting line. Check out their website!



Choose your format & Click!



Web-Based Education

The website has games for children & adults



Classroom Education

School Education Program (Earth Flag)

- Since 1998, our Environmental Educator awards over 50 schools annually.
- Schools complete a variety of environmental actions from recycling and waste reduction to gardening, composting, special collections for books or clothing.
- Energy Efficiency and Water Conservation increasing.





Book Reuse & Recycling



- Each year since 1999 (usually in June) Will County offers a three day book event
- Over 10,000 books are accepted and most are taken for reuse.
- Whatever is not taken is recycled.
- **Softcover books** that are not suitable for reuse may be recycled in curbside programs.



Electronic Recycling

- Each year since 2000 Will County offered at least one one-day collection for electronics.
- Since 2007 Will County has partnered with local governments to offer permanent, year-round sites.
- 2015 – 13 sites accepted over 4 million pounds of electronics.
- **2016 – many sites closing due to weaknesses in the State Law.**





Household Hazardous Waste

- Each year since 1996 Will County offers one to six collection events.
- Since 1999 Will County has contributed funds to the operation of a Regional Permanent HHW.
- Some HHW items are recycled.
- The cost of one-day collection events currently average \$30,000.
- 2015 was the most successful year





Medication Takeback



- Since 2007 Will County, with the IEPA, several pharmacies and police departments, has offered a network of collection sites.
- Will County is working to adapt to new DEA regulations that will allow pharmacies to take back controlled medications.



Traditional Recycling

- Will County offers grants to cities, townships and park districts to host Recycling Drop-Off sites.
- Since 2007 this program has grown even as more communities added curbside recycling.
- Small businesses are welcome.
- Apartments, Condos and those with bi-weekly curbside collection depend on these drop-offs.





Textile Reuse & Recycling



- May 2006 Gym Shoe Collection
- May 2007 All Shoes Collection
- 2008 All Textiles Collection – all types of shoes, clothing, drapes, tableclothes, bedding, etc.
- **The Forest Preserve hosts collection boxes year-round.**
- Home goods are occasionally collected, too!





Grass/Food Recycling



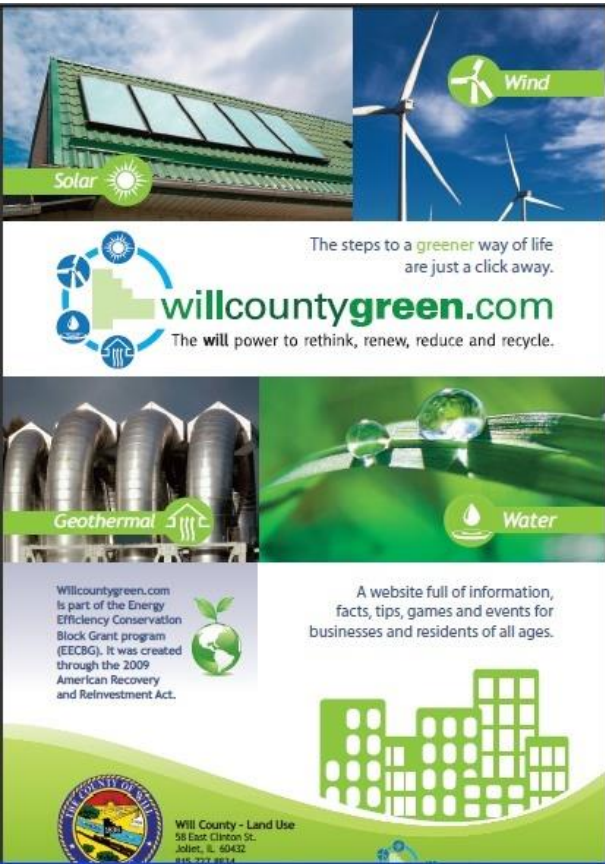
- Will County has sold Compost Bins to encourage landscape waste and food scrap composting.
- Will County ordinances allow, but discourage, burning landscape materials.
- Several compost sites in Will County are permitted to accept food scraps.
- 2014 & 2015 Pumpkin Collections

Inspire & Encourage

Monthly Newsletters

- Upcoming Events
- Accomplishments
- Green Businesses
- Alternative Energy
- Tips

(sent through email)



Solar

Wind

The steps to a greener way of life are just a click away.

willcountygreen.com
The will power to rethink, renew, reduce and recycle.

Geothermal

Water

Willcountygreen.com is part of the Energy Efficiency Conservation Block Grant program (EECBG). It was created through the 2009 American Recovery and Reinvestment Act.

A website full of information, facts, tips, games and events for businesses and residents of all ages.

Will County - Land Use
58 East Clinton St.
Joliet, IL 60432
312.722.8214



willcountygreen.com
The will power to rethink, renew, reduce and recycle.

Save the Date

Greening the Codes

County's GREEN TEAM

Green Business Star recognizes: Plainfield Public Library

Featured Recyclable

Recycle Glass

Featured ReUse Option: St. Vincent DePaul Thrift Store

See the latest edition of the school newsletter, Environews!

Planning a Wedding? - Go Green!

Join Our Mailing List!

Inspire & Encourage

Social Media

- Facebook – goal daily posts
- Twitter – goal daily posts
- LinkedIn
- YouTube
- NEW Instragram



The screenshot shows the Facebook profile for Will County Green. The page header includes the name 'Will County Green' and navigation options like 'Page', 'Messages', 'Notifications', 'Insights', and 'Publishing Tools'. The cover photo features a collage of images: a recycling bin, an aerial view of a building with solar panels, and a woman standing next to a large roll of material. The profile picture is the Will County Green logo. The bio reads: 'Will County Green Recycling & Waste Management Environmental Conservation'. The page shows 6 people visited this week, 735 likes (+3 this week), and 9 people here (0 this week). A 'Boost Your Post' notification is visible. The main content area shows a status update from Will County Green, published by Marta Touloumes Keane, with the text 'Please share our upcoming event with your friends!'. The right sidebar shows 'Promote' options for 'THIS WEEK', including 3 Page Likes, 497 Post Reach, 0 Contact Us, and 0 Website Clicks. A 'Recent' history list on the far right shows years from 2015 to 2010.

Questions?

- Additional Topics of Interest?
- More details?
- Something missed?



815-727-8834

-  Electronics Recycling
-  Household Hazardous Waste
-  Book Reuse and Recycling
-  Traditional Drop-off Recycling

-  Environmental Enforcement
-  Green Business Program
-  School Earth Flag Program
-  Medication Take-Back Programs

More Information

Please see our website: www.willcountygren.com

Email Marta at mkeane@willcountygren.com

