



Make everyday Earth Day - Green your Choices - Save Resources - Be Happy



September Sharing & Caring Options

September brings cooler evenings and the annual Sharefest Recyclepalooza in New Lenox. Be sure to book your appointment for this opportunity to recycle all those odd items from electronics and paint to wood, and donate for reuse to the greater community! Consider volunteering, make some new friends while doing something important for the planet. Speaking of the planet, see the articles below to learn of many green efforts underway around the County and some additional opportunities to learn or do more at home, at school or in your workplace!

[Visit Our Website](#)

Make your appointment for Sept 14 Recyclepalooza

Clean out the garage, under the sink, the closet, the basement and even under the bed. Find all the stuff you don't need cluttering up your home and donate it or recycle it at the annual September Recyclepalooza event in New Lenox. We are accepting Electronics of all sorts (no organs or treadmills), Household Hazardous Waste (see the website for the list of acceptable and non-acceptable items), foam plastic such as Styrofoam Egg Cartons, Cups, Trays and packaging; along with scrap metal, wood, and donations of clothing, books, toys, small home goods, items for the Troops, etc! [Click here to make the required Appointment!](#)



Volunteer to make Recyclepalooza a Success

The Sharefest non-profit group

relies on volunteers of all ages to make their events successful. They offer high school and college students a way to fulfill their community service hours in a meaningful way. Each September, they utilize nearly 100 volunteers over the course of the event to assist with unloading vehicles, sorting donations and directing traffic. Each volunteer only works a few hours and chooses the area in which they wish to assist! Click [here to serve in a fun and fast paced environmental event!](#)



Target & Walmart offer Car Seat Recycling

From Target: Recycle a car seat from **9/3-9/13** and receive a coupon to save on a new seat, stroller or select baby gear. Click this [link to learn more about Target's Offer!](#)



From Walmart: Turn in a car seat your child has outgrown from **9/16-9/30** and receive a \$30 gift card. Click this [link to learn more about Walmart's Offer!](#)

PACE celebrates 35 Years of Service

The Illinois General Assembly created Pace Suburban Bus in 1984. To celebrate 35 years of service, PACE deployed a legacy fleet wrapped to look like buses from the past (One bus out of each garage)! Find out more about this Legacy Fleet and Pace's history on their website: Click the link **'35th Anniversary New!'** (under News & Events).



http://www.pacebus.com/sub/news_events/anniversary.asp

The service has changed a lot since 1984, with new connections between communities and new technologies; and even going beyond traditional models of "fixed route" bus service towards a more flexible, more innovative future. Thanks to everyone for supporting public transit!

Steelman Garden Club a Success

Students at Joliet Township High School celebrate another successful season of gardening as they harvest tomatoes, peppers--sweet and hot, and herbs--lavender, peppermint, dill seed and chocolate mint! They also planted fall crops of green beans, beets, lettuces, kale and carrots. Learning, laughing and loving gardening with assistance from the Univ of IL Master Gardeners!



September 14 Shred Event

Will County residents are invited to bring up to two boxes of personal papers and documents to observe the on-site mobile shredding process. Papers include: Medical records, Legal papers, Canceled checks, Bank/financial statements, Credit card statements or offers, All shredded paper will be recycled. The event will be from 9:30 to 11:30am at the First Bank of New Lenox, 836 W. Laraway Road in New Lenox.



September 28 Solar Tour

The Illinois Solar Energy Association offers an annual Solar Tour as an educational opportunity, giving anyone interested in renewable energy and a chance to see multiple types of installations in and around their communities. See and learn about:

- solar electric (PV)
- solar thermal (hot water and space heating)
- small wind (horizontal and vertical)
- passive geothermal
- electric cars and EV charging stations

This is a chance to speak with knowledgeable professionals and homeowners, possibly even neighbors. You may hear first hand stories from owners on their reason for installing renewable energy, their experiences with it, and how this decision has enhanced their lives.



Give Bikes Some Space

As more people bike to school and work, remember that Illinois law requires motorists to give bicyclists **three feet of space when passing**, and allows motorists to pass bikes in no passing areas for everyone's safety. Of course, the motorist must be careful when passing regardless of the situation.



To Recycle or Not to Recycle

Contamination is a serious issue for recycling. Placing items that contain food causes problems at the Material Recovery Facility (MRF-where items are sorted) and at end markets (where the materials are actually recycled). If there is food inside a bottle, tub or jug, empty it before recycling. If it is contaminating paper, chipboard or cardboard, please don't place it in recycling. Tell your friends! [Click for List!](#)



Beautify your lawn: Plant some Native Species

Tired of mowing grass? Interested in supporting birds, bees and other pollinators? Consider decorating your yard with native plant features. Carve out some areas and plant native grasses, wildflowers, small and large bushes that will offer shelter and food to the winged visitors throughout the various seasons. Minimize the grass and consider switching to an electric battery powered lawn mower to cut all those lawn maintenance pollution issues. [Click to learn more](#) about local native species!



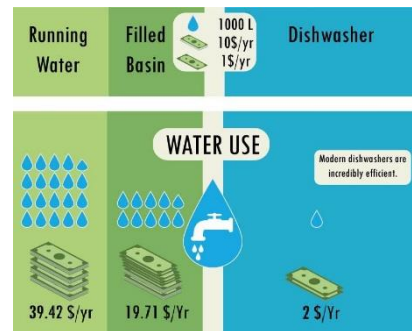
Ask Your School to offer a Sharing Table

A Sharing Table is located in the school cafeteria, offering students a place to leave unopened food and drinks that they have chosen not to consume. This provides an opportunity for other students to take additional helpings of food or beverages from the Sharing Table at no cost to them. Examples of acceptable items: Pre-packaged food, unopened wrapped food and beverages, or food items with a peel.



Run FULL Dishwashers to Conserve

Running water is easily taken for granted but it costs us a lot when you consider the aquifer or lake it is pumped from, the treatment to clean it and the time it takes to replenish it. When we conserve it, we truly make a difference by helping the environment. Most people don't realize how efficient modern dishwashers are and how often it is better to simply scrape the plate and put it in the dishwasher than to hand wash every single item. Even when using a filled basin, a dishwasher is a better choice!



Caulk against the Cold, Clean and Seal Ducts!

One of the most inexpensive do-it-yourself tips for saving energy (air conditioning in the summer and heating in the winter) is to **Caulk**. Use low-cost caulk to seal cracks and openings around windows and doors and even outside wall outlets. **Seal your ducts**. Air loss through ducts can lead to high electricity costs, accounting for nearly 30% of a cooling system's energy consumption. Sealing and insulating ducts can go a long way toward lowering your electricity bills.



EV Charging at Work

Electric vehicles and hybrids are offered by every automaker and businesses that offer employees and/or clients an opportunity to charge are not only enhancing their image, they are attracting and retaining employees. They are satisfying a growing demand and improving the environment.

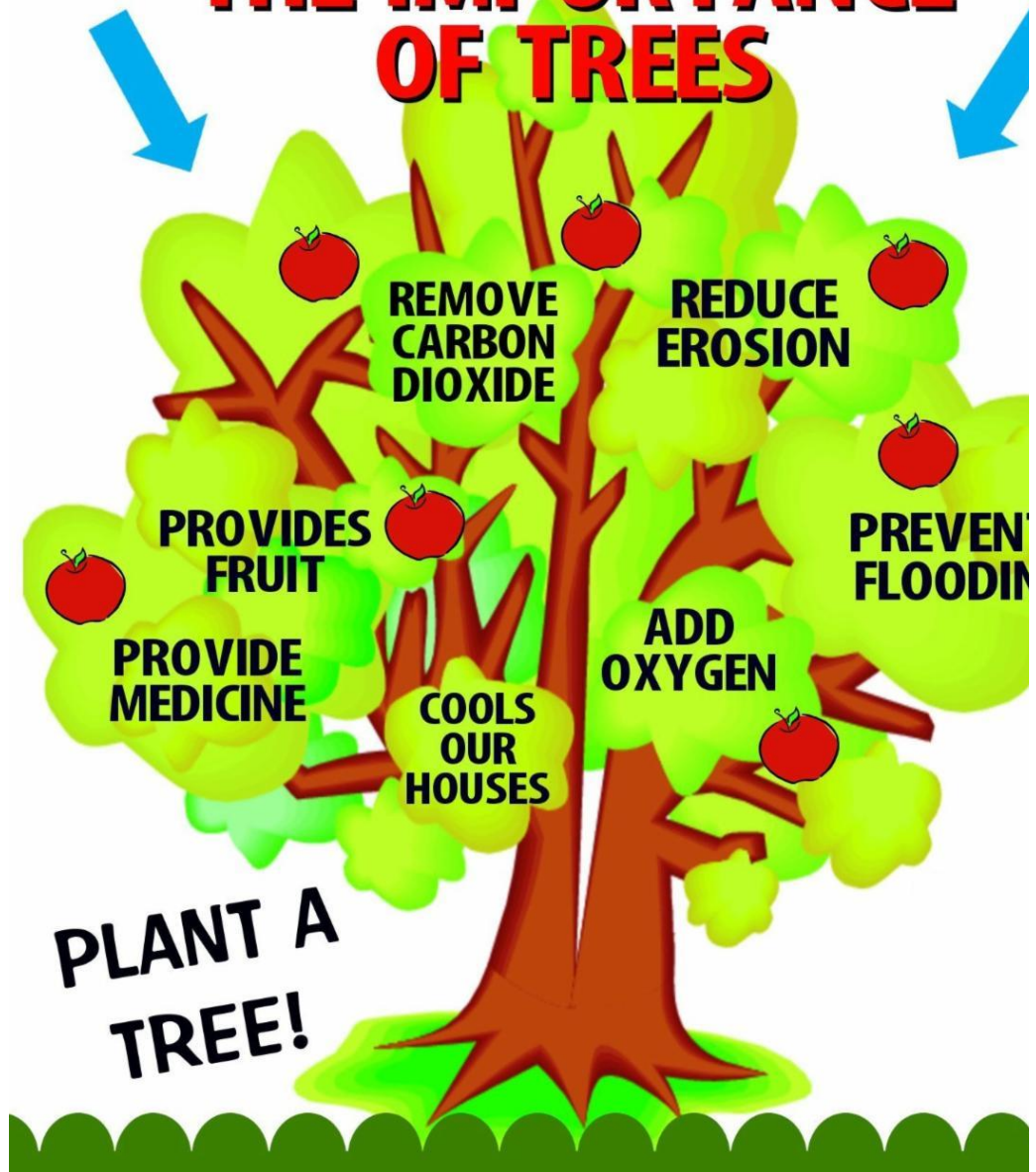


ComEd wants you to add Solar

ComEd offers an interactive solar calculator and encourages you to use it to learn if your roof might have some solar power generating potential. Plug in a few pieces of info and you'll receive an estimated number of solar panels needed to meet your energy needs, installation cost, potential incentives and rebates, payback timeframe and the environmental benefits. Visit ComEd.com/Solar



THE IMPORTANCE OF TREES



Click for more information:

[Battery Recycling](#)

[Book Reuse](#)

[CFL Recycling](#)

[Electronics](#)

[Latex Paint](#)

[Medication](#)

[Plastic Bags/Film](#)

[Styrofoam](#)

[Textiles](#)

[Thermostats](#)

[Traditional Drop-Offs](#)

[Tire Recycling](#)



Play a fun game!



MEMBER
Will County Green Business Program
willcountygreen.com
GREEN Business



Join the School
Earth Flag
Program



Virtual Tour
Tour Recycling
Sites



EV Charging



Commuter Options



Community
and School
Garden
Program



Farmer's Markets
and Fresh Food
Options



Solar Info



Wind Info



Water
Conservation



Geothermal Info

Upcoming Events

Recyclepalooza

Appointments
Required
FREE
New Lenox
Saturday
September 14
8am - 3pm

Shred Event

Limit 2 Boxes
New Lenox
Saturday
September 14
9:30am-11:30am

Car Seat Recycling

at Target
Nationwide
September 3-13
Store Hours

Car Seat Recycling

at Walmart
Nationwide
September 16-30
Store Hours

Climate Action Day

Various Locations
11:30am -1:30pm
September 20

Solar Tour

Various Locations
10am - 3pm
September 28

GREEN DRINKS

Location
&
Date
to-be-announced

Three Events in One

Catapult a Pumpkin
Shred Documents
Recycle Electronics
Romeoville

November 2



Will County | Land Use | Resource Recovery & Energy
815-727-8834 | info@willcountygreen.com | www.WillCountyGreen.com

STAY CONNECTED:



Will County, Land Use Dept, Resource Recovery & Energy,
58 E. Clinton Street, Joliet, IL 60432

Sent by mkeane@willcountygreen.com in collaboration with



Try email marketing for free today!